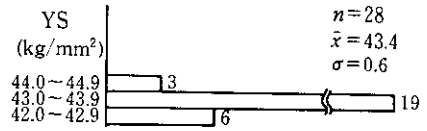


Exhaust System*

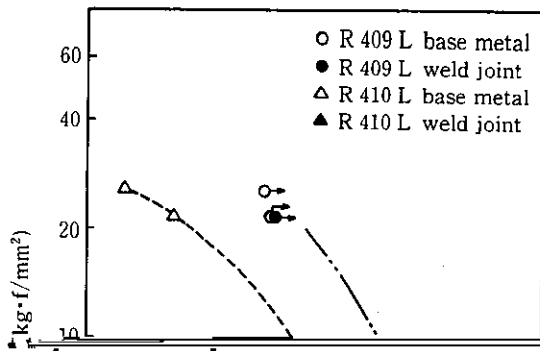
portion is in an inert gas atmosphere, thereby ensuring the soundness of the seam weld.

(2) Automatic Heat Control

Since welding of stainless steel is characterized by



temperature (θ) of the weld and proper welding



not generated until the sample buckled at 1.5 to 1.6 D, and it withstood segment expansion up to 1.2 D.

4 Available Sizes

Available sizes of the stainless steel pipe for exhaust systems made by electric resistant welding are shown in Fig. 5.