

Autoclaved Lightweight Precast Concrete Curtain Wall with Fire Resistant and Drained Joint, "WALL 21"*

Hideaki Watanabe** Ryoji Kinoshita*** Kunio Tsuchikabe****

1 Introduction

Pre-cast concrete curtain walls are currently being applied for the exterior of multi-storied buildings because of their aesthetic appearance, reduced cost,

individual job site. Standard panels, therefore, are produced using a regular mold.

- (2) The concrete is autoclaved at high temperature and pressure, speeding up fabrication, and offers very

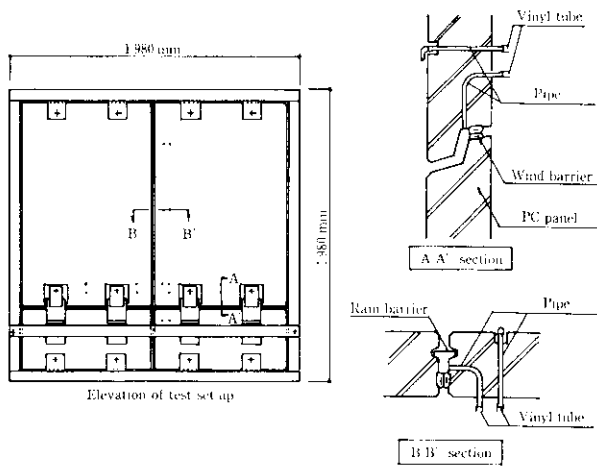


Fig. 3 Test set-up of water tightness test

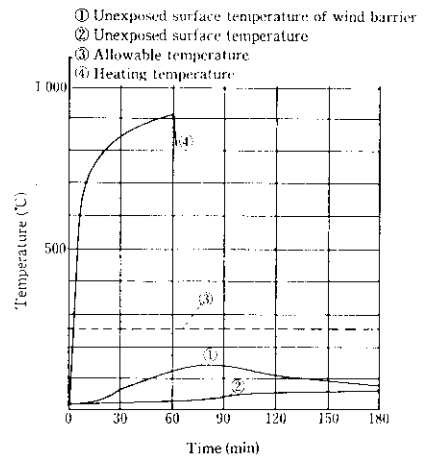
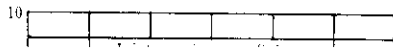


Fig. 5 Fire test results of WALL 21



The maximum temperature of the reverse side was