

Portable Machine Analyzer for Equipment Diagnosis, "Model MK-310"*

Katsuhiko Teramae**

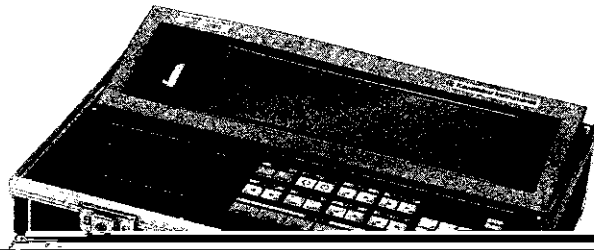


Photo 1 Appearance of MK-310,

(3) Ample Functions

(a) MK-310 can process all kinds of voltage signals, through its vibration-sensor input terminal and input terminals for sound and voltages. It also

Attenuator range:

Vibration displacement

... 5 to 1,500 μ (both amplitudes)

Vibration velocity 0.05 to 15 cm/s

Measuring condition

***** BEARING DAMAGES ***** 199-10-27 10:56
 SIGNAL [VIBRATION]
 MODE [ENV] ROTOR SPEED [660] RPM
 RANGE [0.5G] PITCH DIAMETER [36.0] mm

DATA No. [12,010] NUMBER OF BALLS N: [10]
 METHOD [Relative] ANGLE OF CONTACT : [9.0] deg
 INPUT: [ENV]

Results of diagnosis

DATA No. 12,010 LOGIT 199-10-27 10:57
 RANGE ENV 1 RANGE 0.5G [9.0] deg
 No. 1 FREQUENCY [SPECTRUM] ROTOR SPEED : 660 RPM
 45.0Hz 0.02426 11.0Hz
 135.0 0.0080 33.0Hz
 195.0 0.0032 49.5Hz
 270.0 0.0015 66.0Hz
 360.0 0.0008 88.0Hz
 450.0 0.0017 110.0Hz
 540.0 0.0012 132.0Hz

10 169.9 0.0017
 REPLAY: [REPLAY] FFT REPLAY: [REPLAY]

FFT wave form

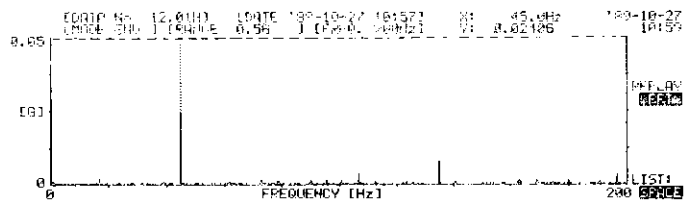


Fig. 2 Diagnosis data of MK-310

(8) General Specifications

way that an automatic diagnostic software incorporated
 calculates remaining frequency obtainable at the time