

# Dry-in-Place Chromate-Coated Electro galvanized Steel Sheet with High Corrosion Resistance, "RIVER ZINC FX"\*

Nobuo Totsuka\*\*  
Shun-ichi Tsugawa\*\*\*\*\*

Takao Kurisu\*\*\*  
Masato Kawai\*\*\*\*\*

Toshio Ichida\*\*\*\*

## 1 Introduction

RIVER ZINC FX is actually a new version of RIVER

ZINC F, an organic composite-coated steel sheet with anti-fingerprint characteristics which was a Kawasaki product. It permits high-temperature drying. Compared with the previous conversion-type, chromate-coated material, the uniformity of coating is improved.

ZINC F, an organic composite-coated steel sheet with anti-fingerprint characteristics which was a Kawasaki

product and a white keytone has been obtained. The new dry-in-place chromate-coated material also has out

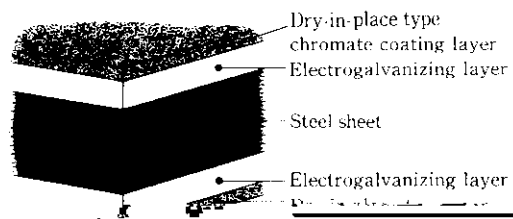


Fig. 1 Schematic diagram of RIVER ZINC FX

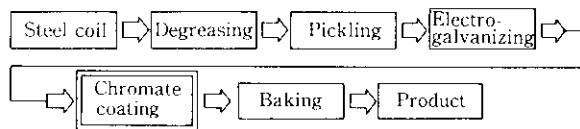


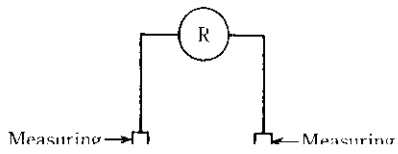
Fig. 2 Manufacturing process of RIVER ZINC FX

sheet, sizes exceeding the above-mentioned ranges are sometimes available.

the steel sheet with an artificial sweat solution and by using the color difference ( $\Delta F$ ) before and after

chromatic difference of the manufacturing process is

the coating. The corrosion resistance of RIVER



## 5 Concluding Remarks

RIVER ZINC FX is a new dry-in-place, chromate-coated steel sheet having high corrosion resistance, high fingerprint resistance, high solvent resistance and good